

Tony Boucher
Artist

Contents

The Hands Series

The Wave

The Other Side

The Signing

The Last Glass Ball

Hands of the Crucified

Trapped & Behind Glass

Reach & Reflections

Metamorphosis & The Pleading

Conflict & Self Portrait in a Sphere

The Chess Series

Metamorphosis on the Eighth Rank & 0-0

Against all Odds & Taken

The Final Act & The Generals

Mate-in-Seven & The Main Line

Where the Kings Meet & Split Personality

Post Blunder & A Chess Miniature

Reti v Bogolyubov (1924) & Opening Theory

Other Paintings

SuperNova

Water, Air, Fire and Water

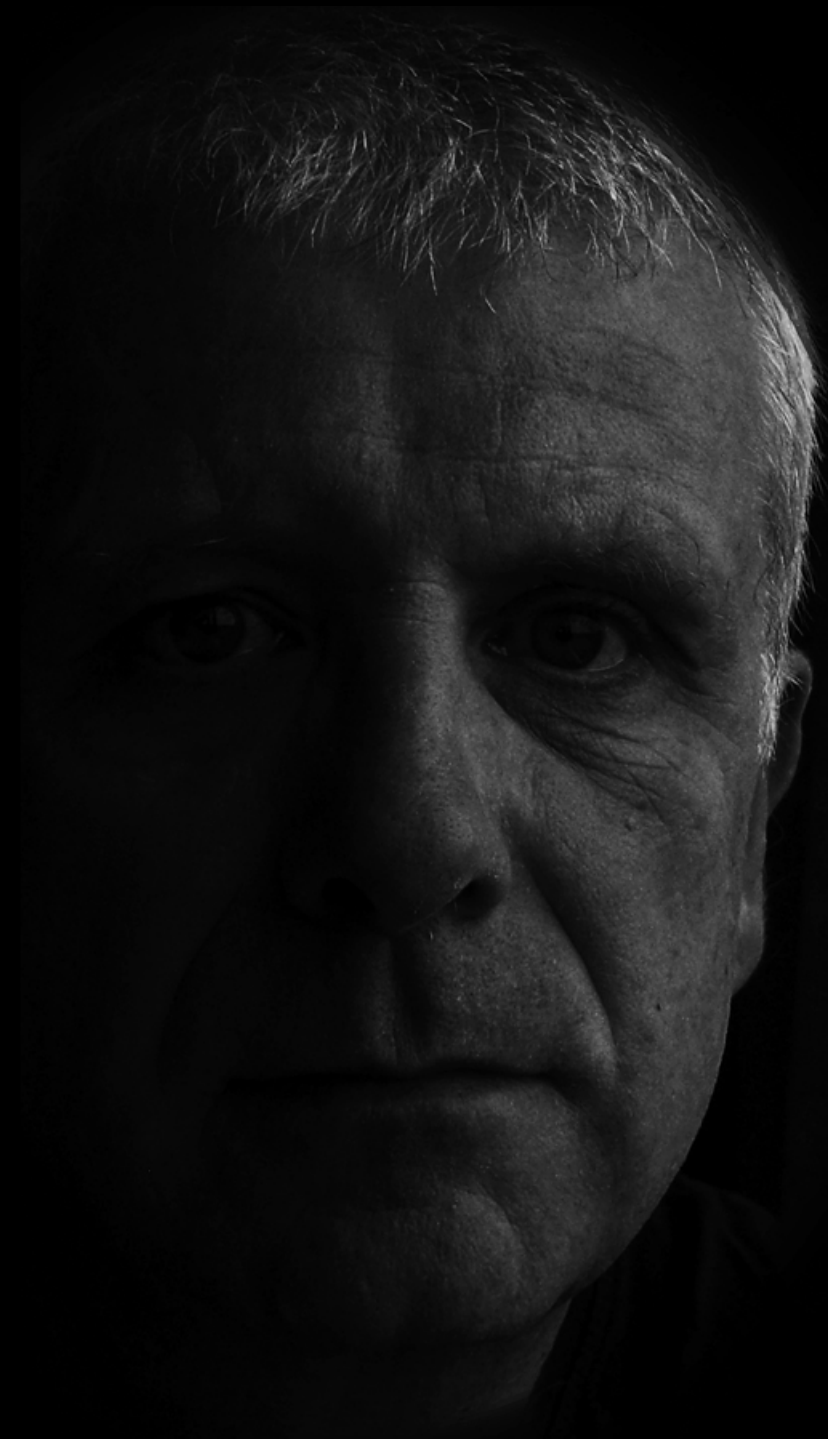
Solar Creation

Vibroverse & Abyss

Biography

Prices & Availability

Contacts

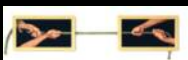


The Wave
Watercolour
60cm x 80cm



From the hands series, *The Wave* was influenced by the famous woodcut print 'The Great Wave off Kanagawa' by Katsushika Hokusai. Upon seeing this print, and with the developing idea I had of painting a wave of hands, I observed the pointed end of the waves in the Hokusai print as fingers. Aggression and desire was the emotional foundation behind this watercolour.

More paintings from 'The Hands Series' (please click on thumbnail to view page)



SuperNova
Acrylic on canvas
80cm x 80cm

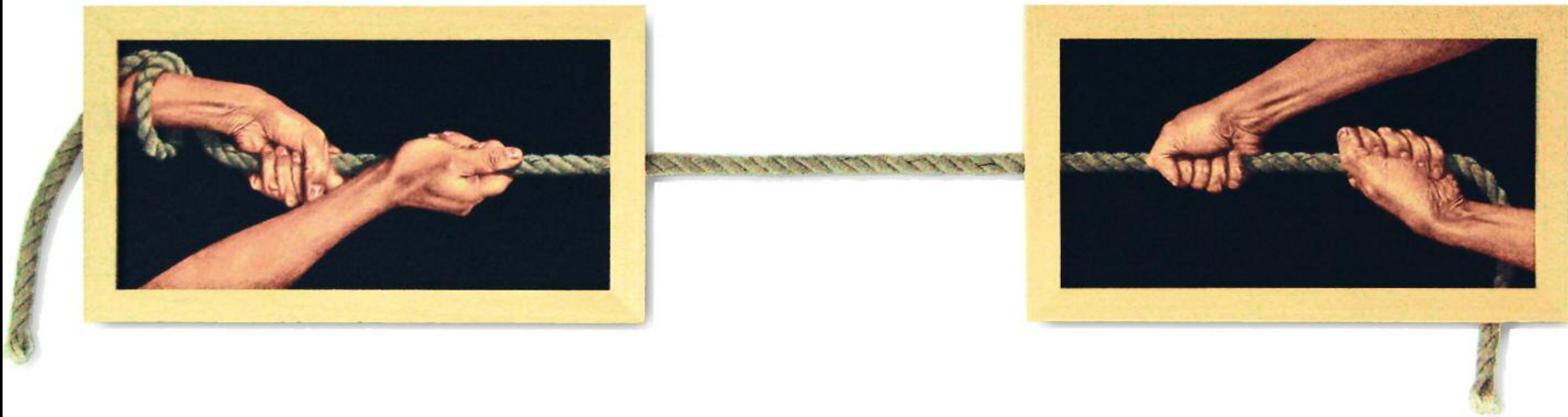


This is the second painting from a group of three, *Solar Creation* and the quadtych *Water, Air, Fire and Earth* being the other two. The idea for this work is a continuation from the quadtych which displayed creation, whereas 'SuperNova' conversely depicts destruction; the sun's expanding and explosive centre leaving the cooling elements.

More paintings from 'Other paintings' (please click on thumbnail to view page)



The Other Side
Watercolour
150cm x 30cm

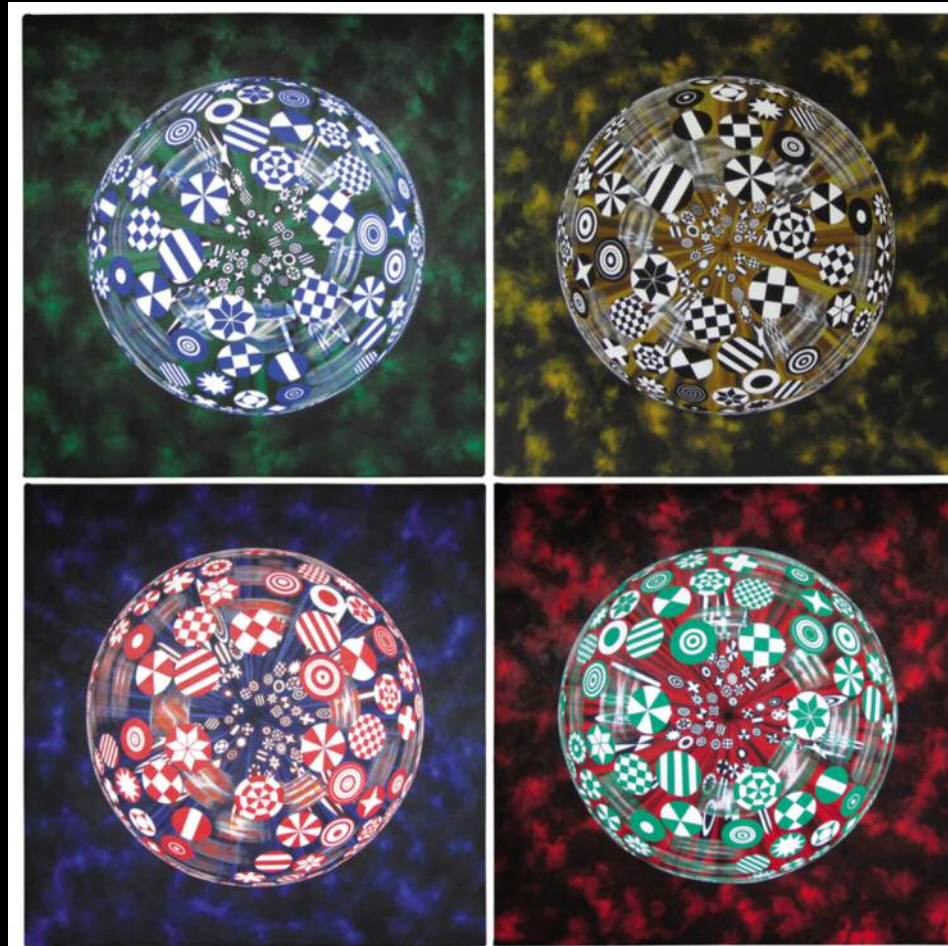


From the hands series, *The Other Side* reflects the greed and jealousy in today's society and the neverending pull in wanting the unattainable. In this work I have created two watercolours interlinked with real rope. The watercolours behind the glass disassociates itself with the spectator whereas the naked rope reinvolves them in the work.

More paintings from 'The Hands Series' (please click on thumbnail to view page)



Water, Air, Fire and Earth
Acrylic on Canvas
184cm x 60cm 4x 60cm x 60cm



This painting, a quadtych, is the first from a group of three, *Supernova* and the *Solar Creation* completing the group. *Water, Air, Fire and Earth* depicts the creation of the four elements in a contrived but random design with each orb illustrating divergent elements in each quarter of the quadtych.

More paintings from 'Other paintings' (please click on thumbnail to view page)

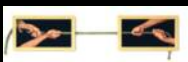


The Signing
Watercolour
60cm x 60cm



From the hands series, *The Signing* was the first of two paintings influenced by M. C. Escher, *Self Portrait in a Sphere* being the second. The central hand is signing the painting, denoting completion and closure.

More paintings from 'The Hands Series' (please click on thumbnail to view page)



The Last Glass Ball
Watercolour
228cm x 840cm



From the hands series, *The Last GLass Ball* is a comment on the environment, connoting the last fragile object on earth.

The second panel from the left displays a hand holding a glass ball, with the other hands indiscriminately coveting it.

This work is a warning concerning the destruction and havoc we will incur and the greed that will follow if the earth's natural resources are not preserved. This watercolour was painted in four sections and is nearly eight feet long.

From conception to completion it took over a year to finish.

More paintings from 'The Hands Series' (please click on thumbnail to view page)



Solar Creation
Acrylic on canvas
70cm x 70cm

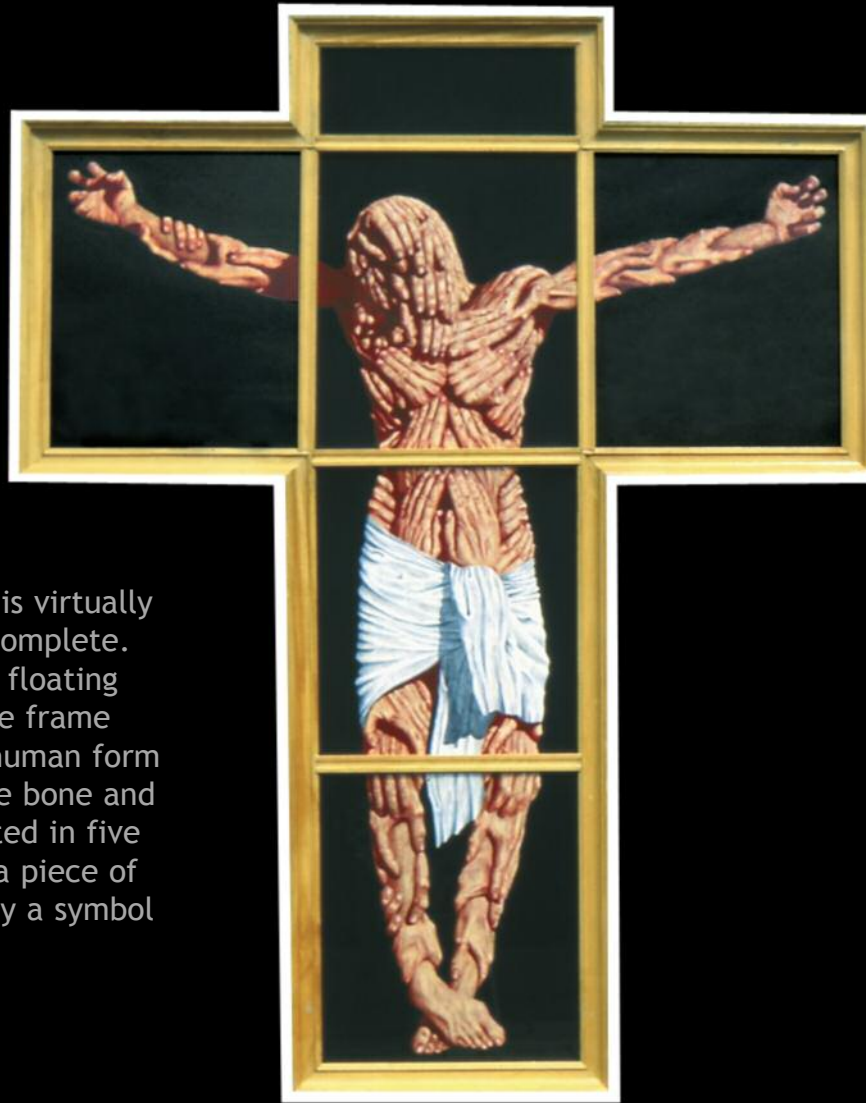


This is the third painting from a group of three, *SuperNova* and the quadtych *Water, Air, Fire and Earth* completing the group. The idea for this work is a continuation of the others and depicts the formation of a star with the elements individually portrayed as patterns on discs. This painting uses metallic acrylic with matt, satin and gloss varnishes.

More paintings from 'Other paintings' (please click on thumbnail to view page)

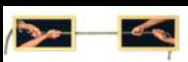


Hands of the Crucified
Watercolour
145cm x 186cm



From the hands series, this painting is virtually lifesize and took nearly a year to complete. It shows a body of hands surreally floating in a ink dark background, with the frame portraying the cross. A study of the human form was necessary to correctly depict the bone and muscle structure. This work is painted in five sections. This was not intended as a piece of religious iconography, it is just simply a symbol of death.

More paintings from 'The Hands Series' (please click on thumbnail to view page)



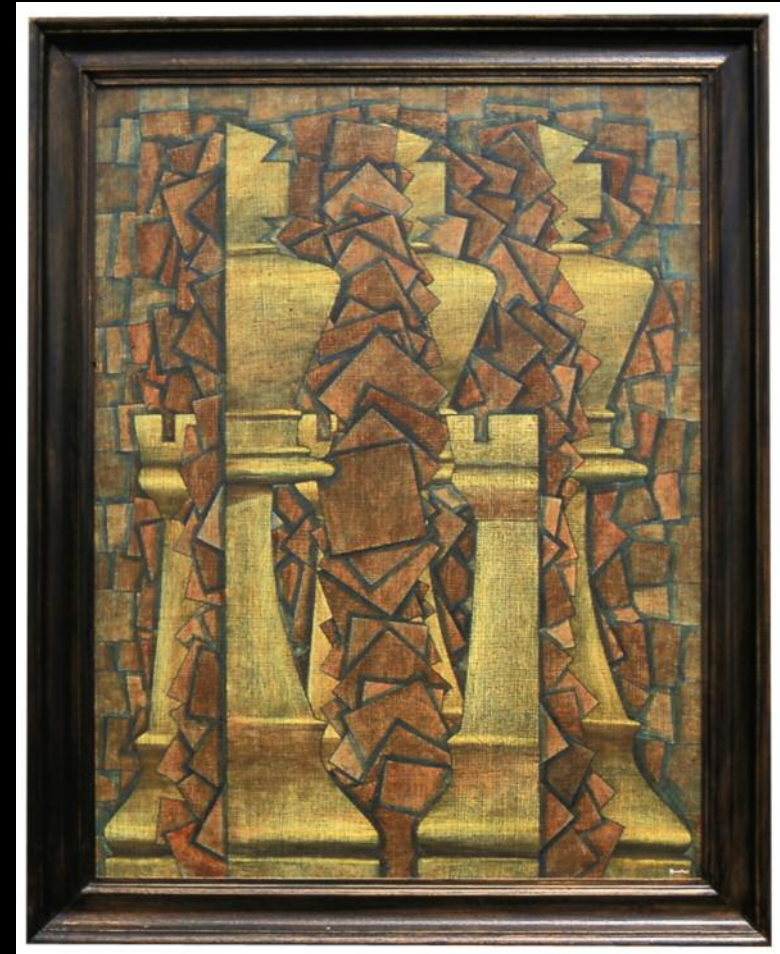
Metamorphosis on the Eighth Rank

Oil on wood
68cm x 108cm



O-O

Oil on wood
85cm x 120cm



From the chess series, these two paintings portray the more unusual moves in chess play. *Metamorphosis on the Eighth Rank* shows the morphing of a pawn into a queen when it reaches the eighth rank of a chess board, symbolising that strength can arise from weakness. *O-O* is the annotation for castling, the transposition of a pawn and its king symbolising the protection of the important. Painted in oil on wood and using brown as the predominant colour with the grain of the wood emphasising the chess theme.

More paintings from 'The Chess Series' (please click on thumbnail to view page)



Trapped
Watercolour
56cm x 70cm



Behind Glass
Watercolour
60cm x 74cm



From the hands series, these two paintings symbolise the terrors occurring behind the glass, reflecting the torment, imprisonment and torture suffered by people at the hands of others.

More paintings from 'The Hands Series' (please click on thumbnail to view page)



Against all Odds

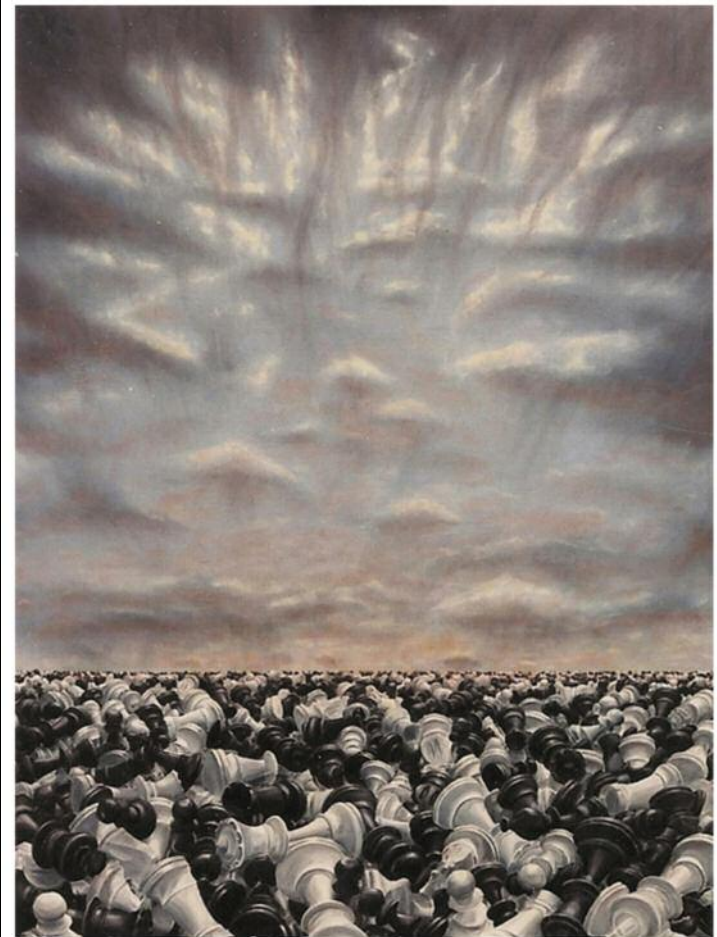
Oil on wood
70cm x 30cm



From the chess series, *Against all Odds* depicts a loss during chess play and, on a wider scale, catastrophies the world has encountered at periodic times in its history. This painting provoked me to realise that while my paintings display chess play on a superficial level, they also symbolise the devastation in this world.

Taken

Oil on wood
70cm x 100cm



From the chess series *Taken* depicts the aftermath after a catastrophic chess tournament, sadly, it can also portray all the chess pieces I have lost in chess play over the years.

More paintings from 'The Chess Series' (please click on thumbnail to view page)



Vibroverse
Oil on wood
60cm x 52cm



This work is about removing the trials and emotions of life by meditation and passing through the obstacles of life into nirvana. There is a pin hole light in the centre of the whirlpool. All the brown colour within the frame is painted using a masking and a wet on wet technique with indigo and burnt sienna, as are all the paintings with this brown colour.

More paintings from 'Other paintings' (please click on thumbnail to view page)



Abyss
Oil on wood
70cm x 90cm



This work portrays the abyss an individual falls into and experiences through depression, with the larger brown areas symbolising helplessness and emptiness.

The Final Act

Oil on wood
60cm x 60cm



From the chess series, *The Final Act* portrays the moment at the end of a chess game when the king is finally checkmated by the opposing queen. The pieces are depicted as half human, half chess piece, with the blood red sky adding to the drama of the occasion.

The Generals

Oil on wood
60cm x 60cm

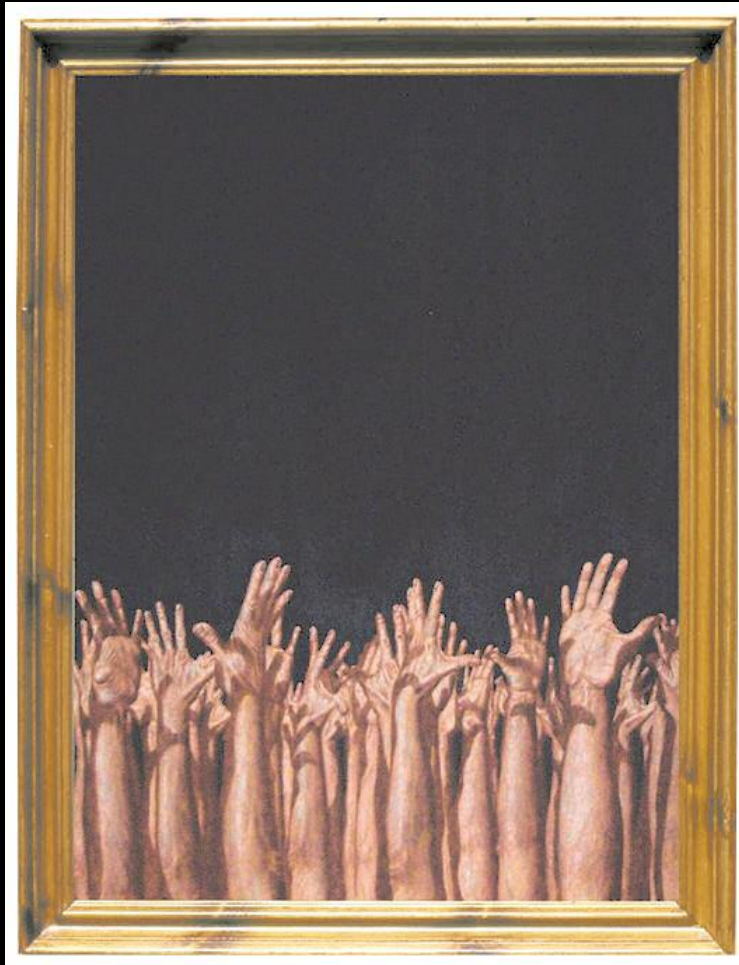


Chess was invented in India and popularised in Persia, evolving from Middle Eastern war games, and this painting, from the chess series, was created with this in mind. The work illustrates two Generals; one an unperturbed winner, the other a despondent loser.

More paintings from 'The Chess Series' (please click on thumbnail to view page)



Reach
Watercolour
85cm x 120cm



Reflections
Watercolour
60cm x 74cm



From the hands series, both these paintings have similar explanations. *Reach* portrays a forest of hands and arms reaching upwards in desperation to the void above. *Reflections* has a similar meaning, but with the hands being pulled down into the void. Both symbolise the anguish in people's lives.

More paintings from 'The Hands Series' (please click on thumbnail to view page)



Mate-in-Seven

Oil on wood
45cm x 83cm



The Main Line

Oil on wood
45cm x 83cm



From the chess series, these paintings together are a diptych. *The Main line* portrays the main known order of text moves known in a particular opening or gambit, whereas at the other end of the game, *Mate-in-Seven* portrays the seven moves to checkmate your opponent. As the moves further ahead in the thought process are portrayed on top of the previous move the chess pieces get smaller as the assessment gets more advanced.

More paintings from 'The Chess Series' (please click on thumbnail to view page)



Metamorphosis
Watercolour
60cm x 80cm



From the hands series, like *Metamorphosis on the Eighth Rank* from the chess series, this work portrays the changing of a pawn into a queen.

The Pleading
Watercolour
60cm x 80cm



The Pleading is another one of my paintings with heavy emotional overtones. It illustrates the striving for life's essentials in order to survive.

More paintings from 'The Hands Series' (please click on thumbnail to view page)



Where the Kings Meet

Oil on canvas

68cm x 58cm

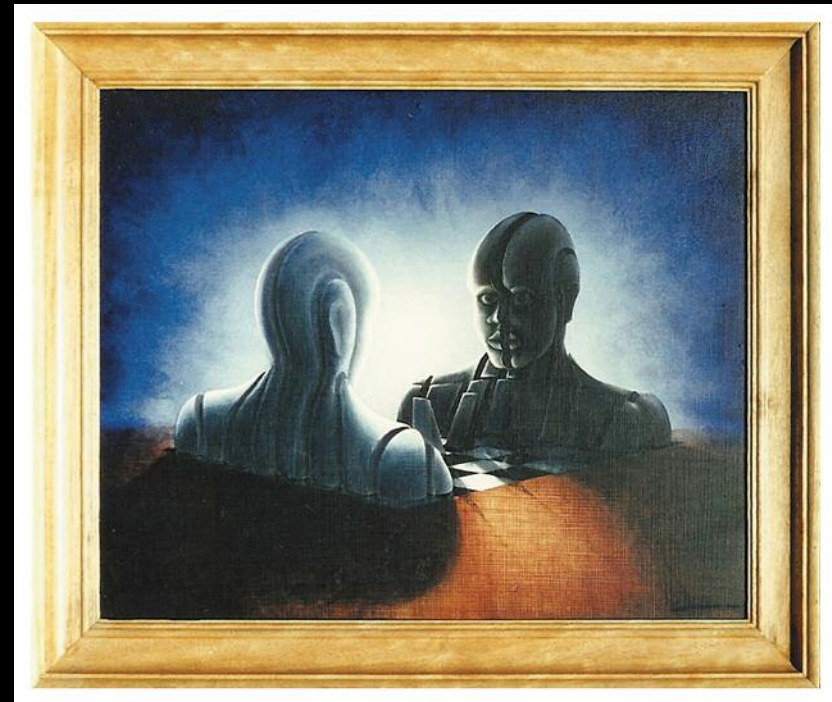


From the chess series, the idea for this work came from a chess tournament I was involved in. Upon observing players on the adjacent table, I observed a row of hard thinking contestants looking for the correct tactics and strategies in their own personal contest.

Split Personality

Oil on wood

60cm x 50cm



From the chess series, this portrays the contestants as the actual chess set. This work is under the ownership of a psychologist who saw the painting as a symbol for schizophrenia.

More paintings from 'The Chess Series' (please click on thumbnail to view page)

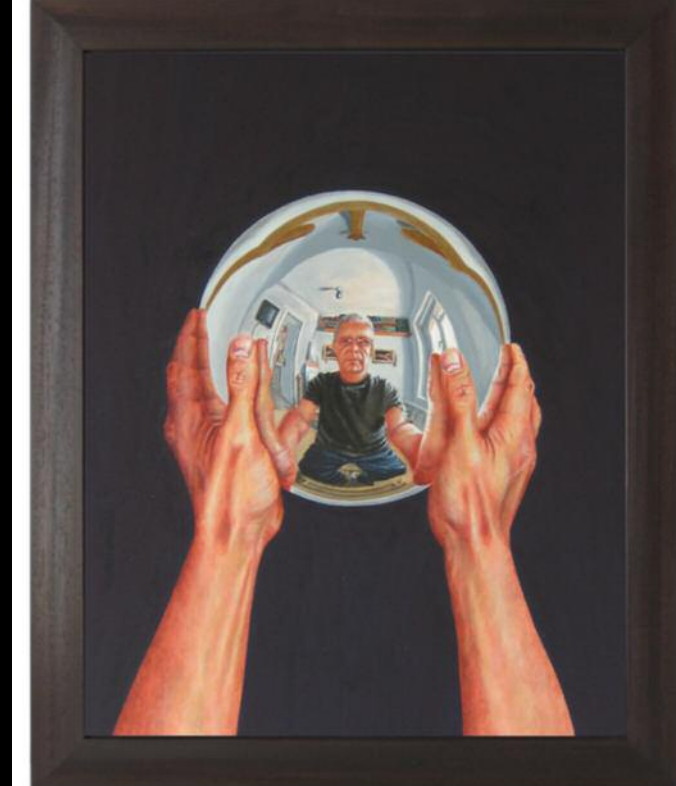


Conflict
Watercolour
60cm x 60cm



From the hands series this work portrays the many different emotions encountered in hostility. Starting with aggression to the left, graduating around the painting to peaceful resolution on the right.

Self Portrait in a Sphere
Watercolour
45cm x 55cm

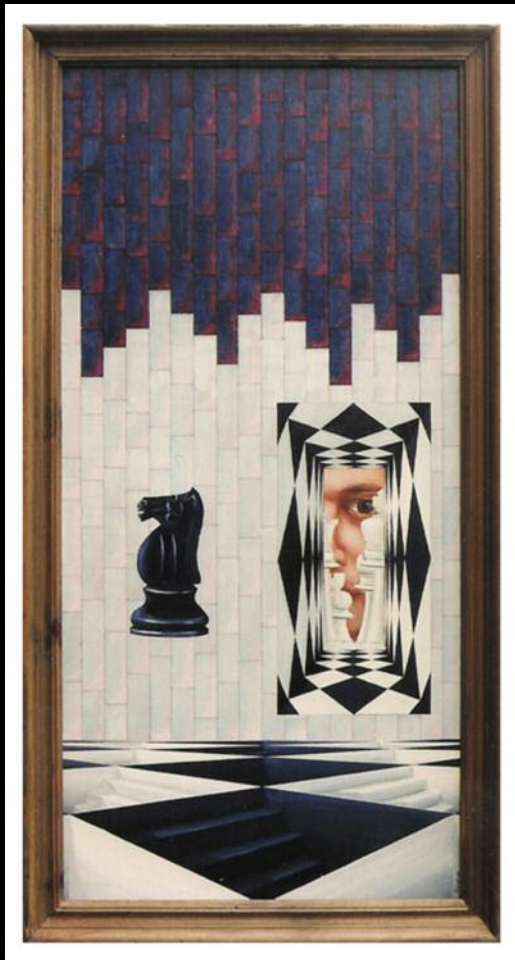


From the hands series this is the second work influenced by M. C Escher, *The Signing* being the first one. This painting shows the easel with this actual painting on it distorted around the top and bottom of the sphere with my studio behind the portrait.

More paintings from 'The Hands Series' (please click on thumbnail to view page)



Post Blunder
Oil on wood
37cm x 70cm

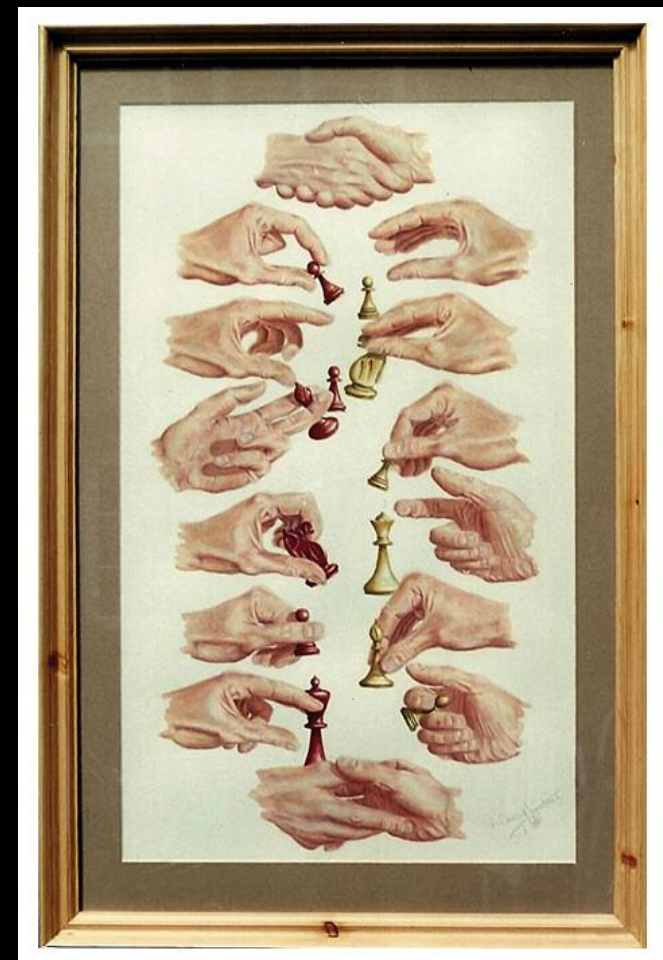


From the chess series *Post Blunder* depicts the emotions felt after making a weak move in chess; the incoming gloom, the lost piece, the opponents satisfaction, and the feeling to escape.

More paintings from 'The Chess Series' (please click on thumbnail to view page)



A Chess Miniature
Watercolour
40cm x 70cm

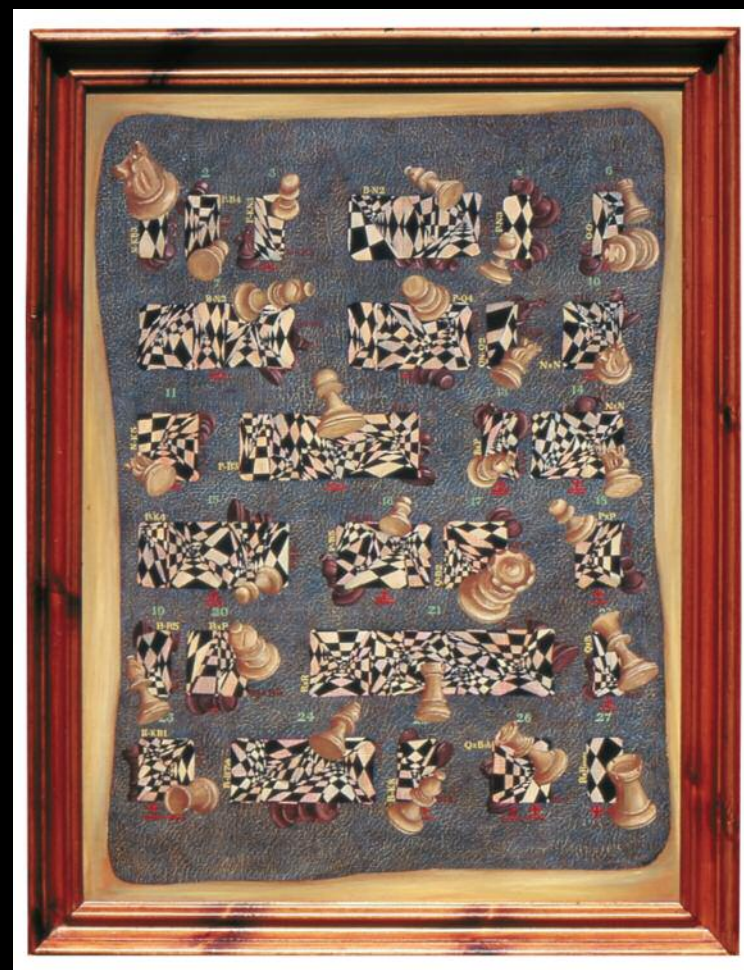


This painting was named after the terminology used for a game of chess with few moves played. This was my first painting involving hands, during which I devised the technique in painting them. The hands series followed.

Opening Theory
Oil on wood
100cm x 65cm



Reti v Bogolybov (1924)
Oil on wood
68cm x 90cm



From the chess series, these two paintings depict how a chess player's mind calculates moves during chess play. *Reti v Bogolybov (1924)*, on the right, portrays a famous game played in 1924 between these two famous grandmasters. This work shows the annotation of moves, the pieces moved and the depth of thought behind each specific move.

Opening Theory, above, portrays the chess player's mind when calculating the best move in the particular opening of a chess game. The highlighted areas show the players preferred combinations, whilst dismissing the unfeasible strategies into the shadows.

More paintings from 'The Chess Series' (please click on thumbnail to view page)



Tony Boucher
Artist
Buckinghamshire UK

Born in 1954 in West London, painting and drawing are two things I have been interested in from a young age. This passion has given me the motivation to focus, create and develop my art throughout my life. With that interest in imagery and a portfolio of art, I managed to obtain employment in the graphics industry. I am a self-taught artist with no formal training. "I feel all art is spontaneous, regardless of how long it takes to create it. The primary image or idea enters your mind, allowing the spontaneous conception that kicks off the process to be developed". It is after that conception and visualisation my preliminaries start for any given painting, first a small rough pencil sketch outlining the look and balance, followed by several larger and more detailed sketches. When I am satisfied with every aspect of the last sketch, I create a same size drawing that is then transferred to a chosen surface. The process of creating these preliminaries can sometimes take longer than the painting itself.

I am inclined to paint in series, having an idea, then developing that idea to its full potential, unaware of the paths that the evolving series will present to me. The first series is of chess paintings portraying the calculated thoughts and emotions involved in chess play. Many works from this series are painted in oil on wood, using brown as the predominant colour and the grain of the wood to emphasise the chess theme. There are many aspects in the chess mind or chess play that reflect experiences in life, and I have tried to portray this in these works.

Following the chess series, I devised a technique of painting hands in watercolour, using the translucency of the medium in layering and washing the colours several times to achieve a skin effect. I have painted many works using this technique, trying to reflect the paramount issues in life, with the majority of these works from this series carrying an underlying emotional and dramatic message, with some paintings representing the misery of people that are less fortunate than others.

In the third and most recent series I have utilised the strength of colour in acrylic to paint floating spheres, depicting the cosmic independent elements in the creation and destruction of the universe in a contrived but random design.

Now living in the South East, married with two daughters, I feel it is time to relax into my art, freeing my mind for the ideas to find me, rather than searching for them myself.

I have had several solo exhibitions and can add both national and international collectors to my list of clients.

Many thanks

A large, stylized, handwritten signature of 'T Boucher' in a dark, textured ink. The 'T' is very large and bold, with a horizontal bar extending across the top. The 'B' is also large and bold, with a thick vertical stroke. The 'oucher' is written in a more fluid, cursive style, with the 'o' being a simple circle and the 'u' having a small loop. The 'c' is a simple curve, and the 'h' is a tall, thin stroke. The 'e' is a simple oval, and the 'r' is a simple vertical stroke with a small hook. The signature is written on a light background.

Prices & Availability

In alphabetical order

Title	Availability	Page
Abyss	£375	14
A Chess Miniature	Not Available	21
Against all Odds	Not Available	13
Behind Glass	£650	12
Conflict	Not Available	20
Hands of the Crucified	£9,500	10
Mate-in-Seven	Not Available	17
Metamorphosis	Not Available	18
Metamorphosis on the Eighth Rank	£1,850	11
Opening Theory	£450	22
O-O	£650	11
Post Blunder	Not Available	21
Reach	£750	16
Reti v Bogolybov (1924)	£650	22
Reflections	£850	16
Self Portrait in a Sphere	£480	20

Title	Availability	Page
Split Personality	Not Available	19
SuperNova	£1,850	4
Solar Creation	£1,255	9
Taken	Not Available	13
The Generals	Not Available	15
The Final Act	Not Available	15
The Last Glass Ball	£12,000	8
The Main Line	Not Available	17
The Other Side	£3,200	5
The Pleading	Not Available	18
The Signing	Not Available	7
The Wave	£4,500	3
Trapped	£2,500	12
Vibroverse	£3,200	14
Water, Air, Fire and Earth	£6,900	6
Where the Kings Meet	Not Available	19

Click on tinted area to view page

tboucher@madasafish.com

+44 (0)1628 471506

www.tonyboucher.co.uk

